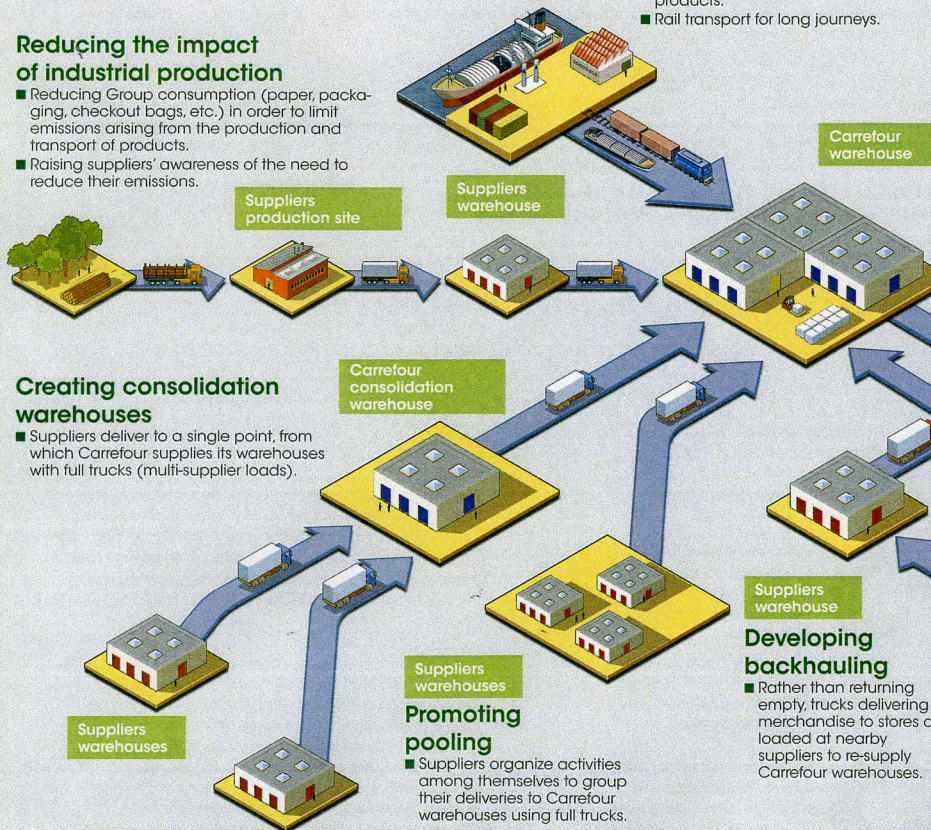


# Reducing carbon emissions throughout the supply chain

The Group aims to reduce its CO<sub>2</sub> footprint and to help its customers do the same. By improving the efficiency of its retail activities and its product offering, in particular through the promotion of energy-saving products, the company contributes to reducing greenhouse-gas emissions. This diagram illustrates the direct and indirect emissions linked to its activities and examples of initiatives taken to reduce them.

## Reducing the impact of industrial production

- Reducing Group consumption (paper, packaging, checkout bags, etc.) in order to limit emissions arising from the production and transport of products.
- Raising suppliers' awareness of the need to reduce their emissions.



## Using alternative modes of transport

- River transport from ports for imported products.
- Rail transport for long journeys.

## Creating consolidation warehouses

- Suppliers deliver to a single point, from which Carrefour supplies its warehouses with full trucks (multi-supplier loads).

## Carrefour consolidation warehouse

## Promoting pooling

- Suppliers organize activities among themselves to group their deliveries to Carrefour warehouses using full trucks.

## Developing backhauling

- Rather than returning empty trucks delivering merchandise to stores are loaded at nearby suppliers to re-supply Carrefour warehouses.

## Optimizing downstream logistics

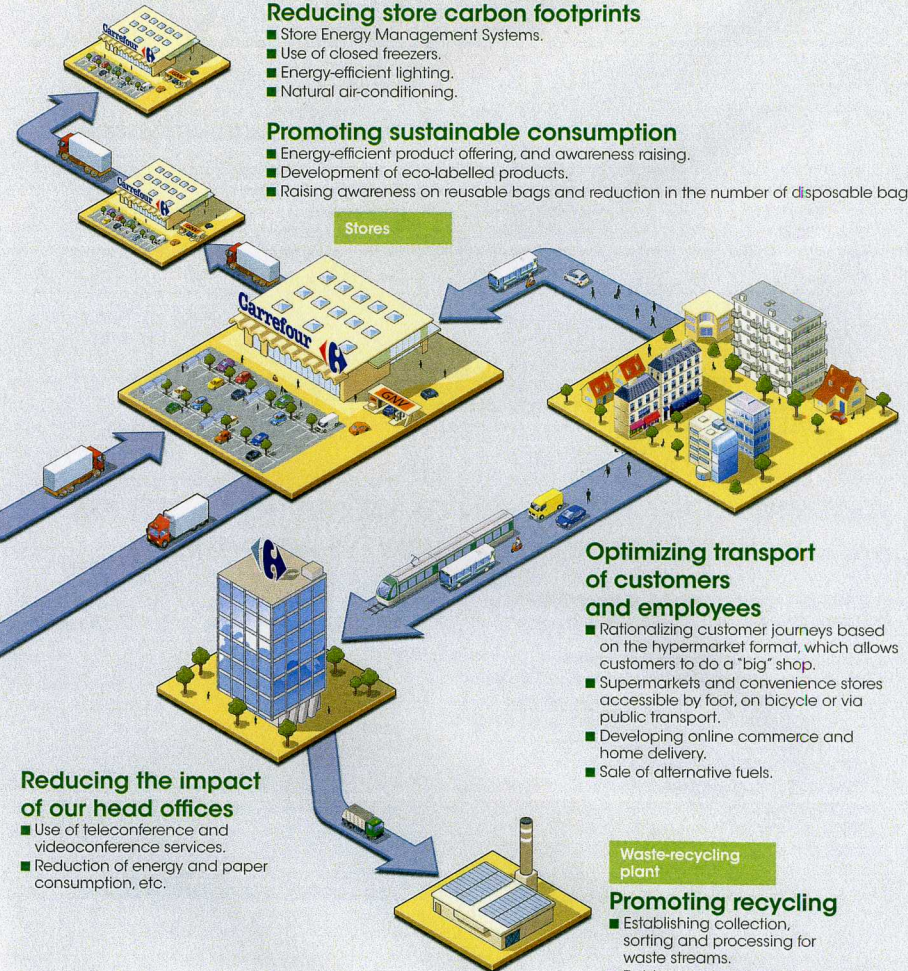
- Implementing tools to reduce the number of trucks and kilometres travelled.
- Optimizing the number of pallets per truck and boxes per pallet.
- Developing co-deliveries: the same truck delivers to several adjacent stores.
- Sustainable technology in new warehouses.

## Reducing store carbon footprints

- Store Energy Management Systems.
- Use of closed freezers.
- Energy-efficient lighting.
- Natural air-conditioning.

## Promoting sustainable consumption

- Energy-efficient product offering, and awareness raising.
- Development of eco-labelled products.
- Raising awareness on reusable bags and reduction in the number of disposable bags.



## Optimizing transport of customers and employees

- Rationalizing customer journeys based on the hypermarket format, which allows customers to do a "big" shop.
- Supermarkets and convenience stores accessible by foot, on bicycle or via public transport.
- Developing online commerce and home delivery.
- Sale of alternative fuels.

## Reducing the impact of our head offices

- Use of teleconference and videoconference services.
- Reduction of energy and paper consumption, etc.

## Waste-recycling plant

## Promoting recycling

- Establishing collection, sorting and processing for waste streams.
- Raising awareness among the various stakeholders.